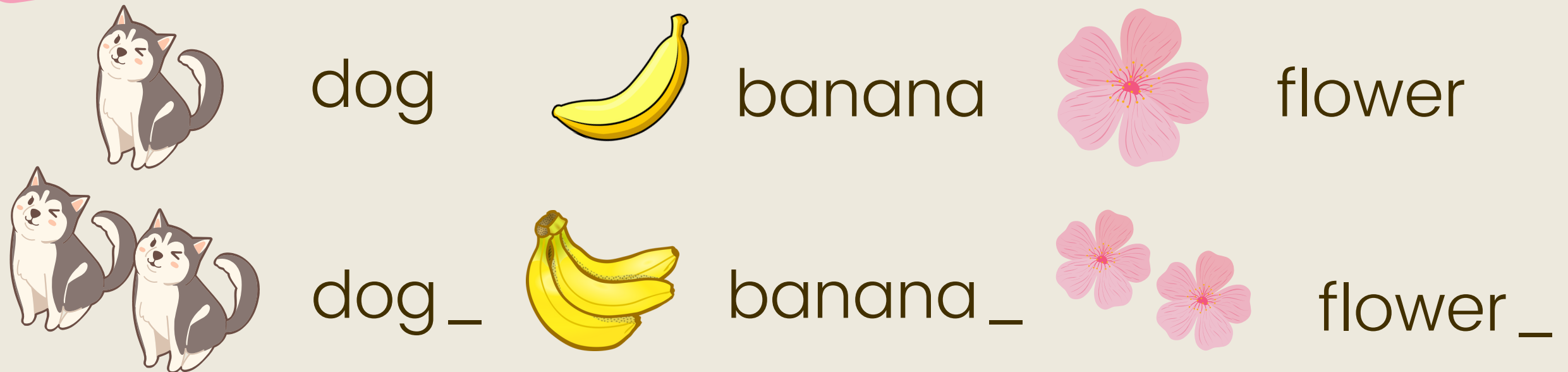
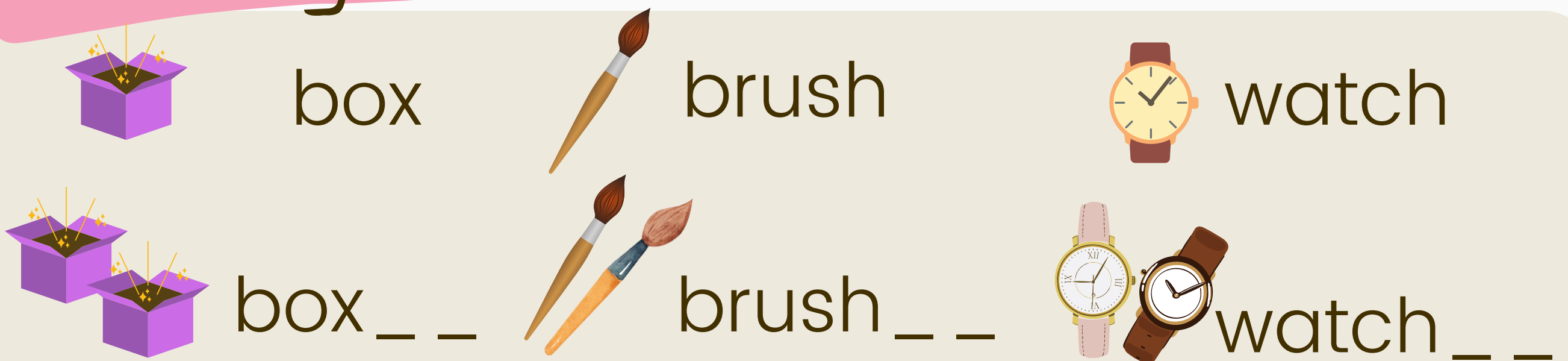


Regular **PLURAL NOUNS**

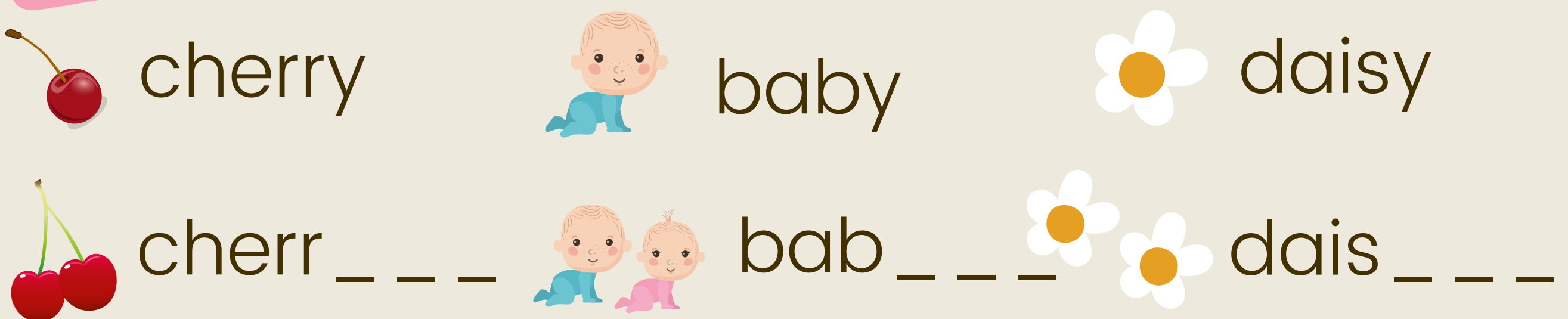
Adding -s



Adding -es (Nouns end with ch, sh, s, x, z)



Adding -ies (Nouns end with y; drop y, add ies)



Adding -ves (Nouns end with f, fe; drop f, fe, add ves)

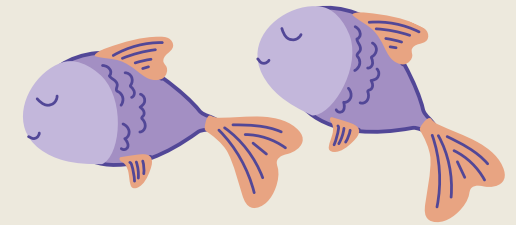
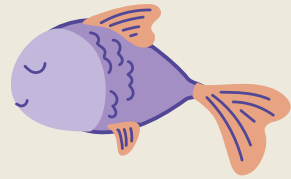


Irregular **PLURAL NOUNS**

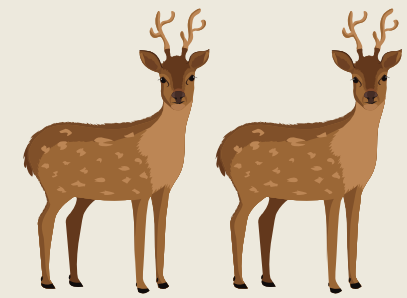
sheep



fish



deer



man



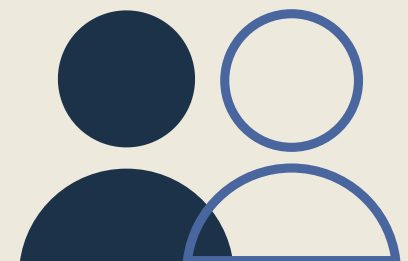
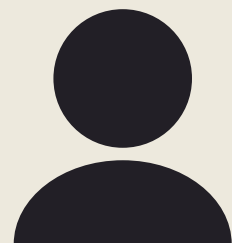
woman



child



person



mouse



foot



tooth

